



**Tshwane University  
of Technology**

*We empower people*

## **WIRELESS HOTSPOTS**

# **How to connect to eduroam wireless network (Wi-Fi) Guideline Document for Windows Vista**

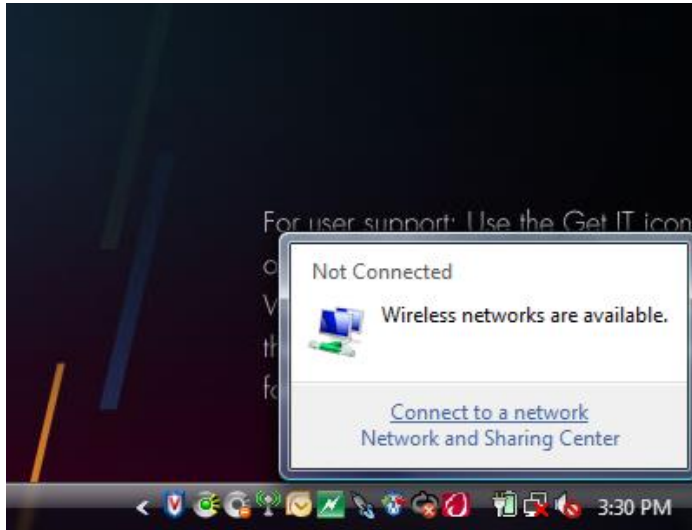
REVISION 2.0

**Compiled by:**

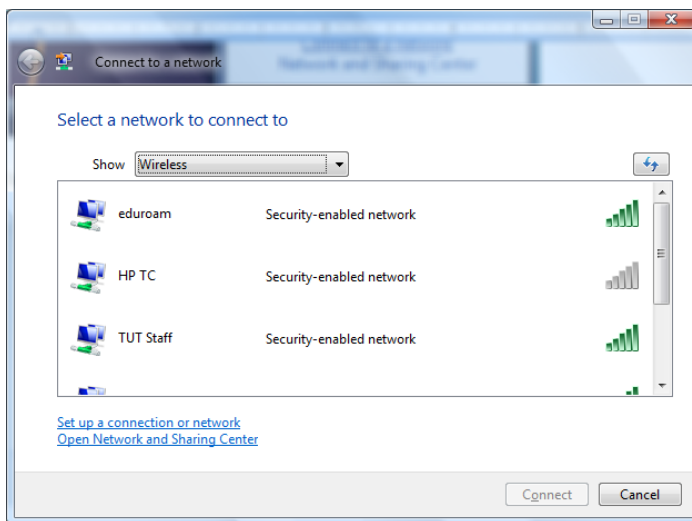
**ICT Services**

Date: 11 June 2014

1. Click the icon with two computer screens on the task bar as shown below and then click “Connect to a network”, or go to Network and Sharing Center and then click “Connect to a network”



Click on eduroam



As it is a secure network, you'll need to provide your username and password. Uncheck "Use my windows user account" and then enter your credentials as follows:

- Username: [username@tut.ac.za](#)
- Password: #####

### Windows Vista



After successful authentication, if your device is not a TUT domain-joined device, you may be prompted to accept/install a server certificate.

Accept the server certificate and you will be connected to the eduroam Wi-Fi network.

For further support or enquiry, please contact TUT Service desk on 012 382 5678 or send an email to [servicedesk@tut.ac.za](mailto:servicedesk@tut.ac.za)